

# Goorambat Wagyu

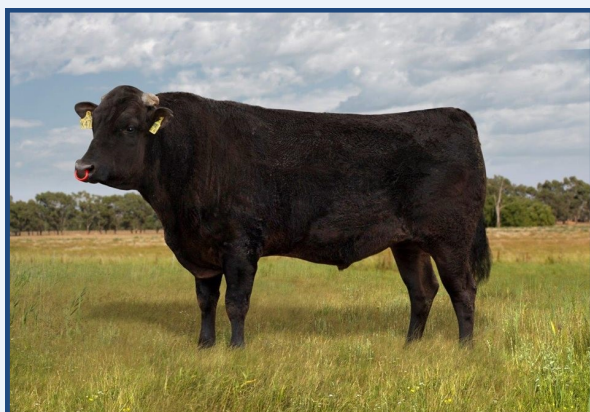
Pedigree backed by performance

Offering multi award winning Australian Wagyu genetic solutions for:

\* Carcass consistency – marbling & flavour \* Genetic diversity

## GOORAMBAT DOUBLESIXTY K473

Aust. Rego #: GRSFK0473 D.O.B 9/05/14 **B3F, CHSF, CL16F, F11F, F13F**



WKSFM0164 World K'S Michifuku

**SIRE:** WKSFU0006 World K'S Michitsuru (AI) (ET)  
WKSFS0004 World K'S Hisako 6504 (AI) (ET)

MOYFA0244 Moyhu Ichiryuno (AI) (ET)

**DAM:** GRSFE0122 Goorambat E0122 (AI) (ET)  
Kitateruyasudoio003

A sire just ready to marble. Combining Michifuku, Yasufuku, Ichiryuno and Kitateruyasudoio in the one pedigree. Added to that, proven dam carcass performance. E122 steer sired by PMGFD0139 MS8, CWT 455 kgs, age at slaughter 1218 days, Haruki 11 sired steer MS9+, CWT 423kgs, age at slaughter 728 days.

Semen now available @ \$40 + GST

\* Accredited Export Semen

\* Sexed semen available

### 16/16 Analysis

Group	Tajima	Kedaka	Tottori	Itozakura	Shimane	Okayama	Hiroshima	Other	Total
D	12.41	0.94	0.69	0.38	0.03	0.08	0.11	0.66	16.01
	78%	14%	5%	21%	1%	9%	2%	2%	

### Wagyu Group Breed Plan EBV's July 2019

\* Breed Average EBV's for 2017 born calves

	GL	BW	200D	400D	600D	MCW	MILK	SCR	CW	EMA	RUMP	RBV	MARBLE SCORE	MARBLE FINENESS	SRI	FBTI	F1TI
	+0.7 58%	+1.8 75%	+10 80%	+10 82%	+14 84%	+10 68%	0 51%	-0.5 66%	+4 71%	+5.6 54%	-0.3 56%	+1.1 46%	+0.6 57%	+0.22 53%	+\$130	+\$96	+\$87
*	+0.2	+1.0	+9	+15	+18	+19	+0	+0.0	+13	+0.8	+0.2	-0.1	+0.6	+0.13	+\$119	+99	+\$89
%	70	75	45	70	60	75	50	70	75	1	65	5	45	20	35	55	55

% = % Rank in the current genetic level of the breed