

# Goorambat Wagyu

**Pedigree backed by performance**

Currently offering multi award winning Australian Wagyu genetic solutions for:

\* Carcass consistency — marbling & flavour \* Genetic consistency

## GOORAMBAT MR. MARBLE K483

Aust. Rego #: GRSFK0483

D.O.B 17/05/14

B3FU, CL16FU, CHS1%, F11C



WKSFM0139 World K'S Haruki 2  
**SIRE:** WKSFP1593— Shigeshigetani  
WKSFL0976 World K'S Suzutani

Sumo Itoshigenami X0065  
**DAM:** SMOFE0175 Sumo Cattle Co Nami E175 (ET)  
IMUFR3258 TF Terutani 40/1 (IMP USA)

**Mr. Marble K483** offers an outstanding combination of genetics. A beautifully balanced pedigree with Shigeshigetani, Itoshigenami TF148 and Terutani 40/1 all featuring. "Shigeshigetani is one of the most well rounded and consistent carcass sires available" says Scott DeBruin, Mayura Station.

**Semen now available @ \$40+GST \*Accredited Export Semen Sexed semen available**

### 16/16 Analysis

Group	Tajima	Kedaka	Tottori	Itozakura	Shimane	Okayama	Hiroshima	Other	Total
D	10.47	1.06	-	2.5	0.5	0.16	0.81	0.50	16.01
	65%	14%	5%	21%	1%	9%	2%	2%	

### Wagyu Group Breed Plan EBV's July 2017

\* Breed Average EBV's for 2015 born calves

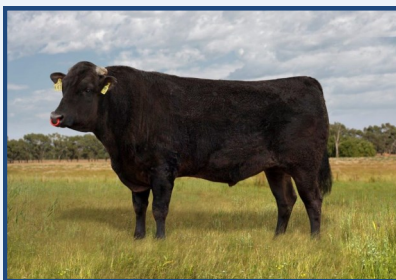
	GL	BW	200D	400D	600D	MCW	MILK	SCR	CW	EMA	RIB	RUMP	RBV	MS	MF	FTI
	-1.2	-0.4	+11	+17	+20	+18	+2	+0.1	+18	+0.3	0.0	+0.5	-0.3	+0.2	-0.05	+\$119
	45%	61%	63%	65%	59%	51%	45%	42%	55%	44%	44%	45%	40%	46%	43%	
*	+0.1	+1.0	+9	+15	+19	+21	+1	+0.1	+13	+0.6	+0.3	+0.6	-0.2	-0.1	+0.00	+\$129

## GOORAMBAT DOUBLESIXTY K473

Aust. Rego #: GRSFK0473

D.O.B 9/05/14

B3FU, CL16FU, CHS.F, F11F



WKSFM0164 World K'S Michifuku  
**SIRE:** WKSFU0006 World K'S Michitsuru  
WKSFS0004 World K'S Hisako 6504

MOYFA0244 Moyhu Ichiryuno (AI) (ET)  
**DAM:** GRSFE0122 Goorambat E0122 (AI)(ET)  
Kitateruyasudoi003

A sire just ready to marble. Combining Michifuku, Yasufuku, Ichiryuno and Kitateruyasudoi in the one pedigree. Added to that, proven dam carcass performance E122 steer sired by PMGFD0139 MS8, CWT 455 kgs, age at slaughter 1218 days, Haruki 11 sired steer MS9+, CWT 423kgs, age at slaughter 728 days

**Semen now available @ \$40 +GST \*Accredited Export Semen Sexed semen available**

### 16/16 Analysis

Group	Tajima	Kedaka	Tottori	Itozakura	Shimane	Okayama	Hiroshima	Other	Total
D	12.41	0.94	0.69	0.38	0.03	0.08	0.11	0.66	16.01
	78%	14%	5%	21%	1%	9%	2%	2%	

### Wagyu Group Breed Plan EBV's July 2017

\* Breed Average EBV's for 2015 born calves

	GL	BW	200D	400D	600D	MCW	MILK	SCR	CW	EMA	RIB	RUMP	RBV	MS	MF	FTI
	-0.4	+0.9	+10	+15	+19	+17	-1	-0.5	+5	+5.4	-0.7	-1.0	+1.5	+0.5	+0.27	+\$126
	34%	48%	58%	60%	55%	44%	37%	33%	54%	43%	38%	42%	37%	53%	50%	
*	+0.1	+1.0	+9	+15	+19	+21	+1	+0.1	+13	+0.6	+0.3	+0.6	-0.2	+0.0	-0.1	+\$129



# Goorambat Wagyu

Pedigree backed by performance

Currently offering multi award winning Australian Wagyu genetic solutions for:

\* Carcass consistency – marbling & flavour \* Genetic consistency

## GOORAMBAT TERUTANI F146 (AI)

Aust. Rego #: GRSFF0146

D.O.B 23/6/2010

B3F, CL16F, CHS.F, F11F



IMUFJTF Terutani J2494 TF40

IMUFQTF 148 Itoshigenami TF148

SIRE: IMUFR 3258 TF Terutani 40/1

DAM: GRSFC0021 Goorambat F C0021

PEDFA 2453TF Dai 2 Kinntou 3

GRSFY0101 Goorambat F Y101

**F146** is one of the first 40/1 sons to have semen available in Australia. His sire, Terutani 40/1 is the bull everyone has wanted to use in a full-blood breeding program due to the progeny results under feedlot conditions and also because of the milk and size he is leaving in his daughters. By combining the all round ability of Terutani 40/1 from the Tajima line with the maternal grandsire Itoshigenami TF148 from the Shige Kanenami line, we are bringing into the pedigree the famous cow families of Okutani, Suzutani and

Rikitani. The extra marbling ability added by having TF 148 should make this young sire a favourite of breeders of both full blood and commercial crossbred Wagyu.

Tested FREE of all 5 recessive genes.

\* **Export qualified semen available \$25 + GST**

### 16/16 Analysis

Group	Tajima	Kedaka	Tottori	Itozakura	Shimane	Okayama	Hiroshima	Other	Total
C	10.05	0.14	0.00	3.88	0.69	0.32	0.73	0.19	16.00
	62.8%	0.9%	0.0%	24.3%	4.3%	2.0%	4.6%	1.2%	

### Wagyu Group Breed Plan EBV's July 2017

\* **Breed Average EBV's for 2015 born calves**

	GL	BW	200D	400D	600D	MCW	MILK	SCR	CW	EMA	RIB	RUMP	RBV	MS	MF	FTI
	+0.3	+0.7	+6	+14	+17	+19	+2	+0.5	+17	-1.0	+1.3	+1.8	-1.3	+0.3	+0.07	+\$136
	63%	91%	82%	76%	76%	67%	63%	51%	66%	55%	55%	57%	52%	56%	53%	
*	+0.1	+1.0	+9	+15	+19	+21	+1	+0.1	+13	+0.6	+0.3	+0.6	-0.2	-0.1	+0.00	+\$129

## SUMO CATTLE CO MICHIFUKU K430 (AI) (ET)

Aust. Rego #: SMOFK0430

D.O.B 19/9/2014

B3FU, CHSF, CL16FU, F11F



PEDFA 201 Monjiro J11550

SMOFC0103 Sumo Cattle Co Itoshigenami

SIRE: WKSFM0164 World K's Michifuku

DAM: SMOFF0021 Sumo Cattle Co Nami FO21

PEDFA 215 Michiko J655635 (AI)

SMOFB0031 Sumo Cattle Co Tani B031

**Sumo Cattle Co Michifuku K430** was selected by us because of his outstanding pedigree. We wanted a sire to use over our Shimane/Tottori influenced females and with K430 having Michifuku, TF148 and Terutani 40/1 in the pedigree he provides an ideal combination for us. The sire himself is a phenotypically upstanding and correct bull and being free of recessives has added to this exciting sire. His pedigree lends him to being ideal as an F1 sire or over fullblood cows with that Shimane or Tottori background.

### 16/16 Analysis

Semen now available @ \$80 +GST

\* **Accredited Export Semen**

Group	Tajima	Kedaka	Tottori	Itozakura	Shimane	Okayama	Hiroshima	Other	Total
D	12.07	0.31	0.00	2.57	0.35	0.24	0.31	0.14	16.00
	75.0%	2%	0.0%	16%	2%	2%	2%	1%	

### Wagyu Group Breed Plan EBV's July 2017

\* **Breed Average EBV's for 2015 born calves**

	GL	BW	200D	400D	600D	MCW	MILK	SCR	CW	EMA	RIB	RUMP	RBV	MS	MF	FTI
	+1.4	+2.5	+18	+31	+43	+43	+10	+2.2	+25	0.0	-0.2	-1.6	+1.0	-0.6	+0.13	-\$26
	63%	77%	79%	79%	80%	70%	64%	57%	76%	70%	65%	70%	62%	75%	70%	
*	+0.1	+1.0	+10	+15	+19	+21	+1	+0.1	+13	+0.6	+0.3	+0.6	-0.2	-0.1	+0.00	+\$129